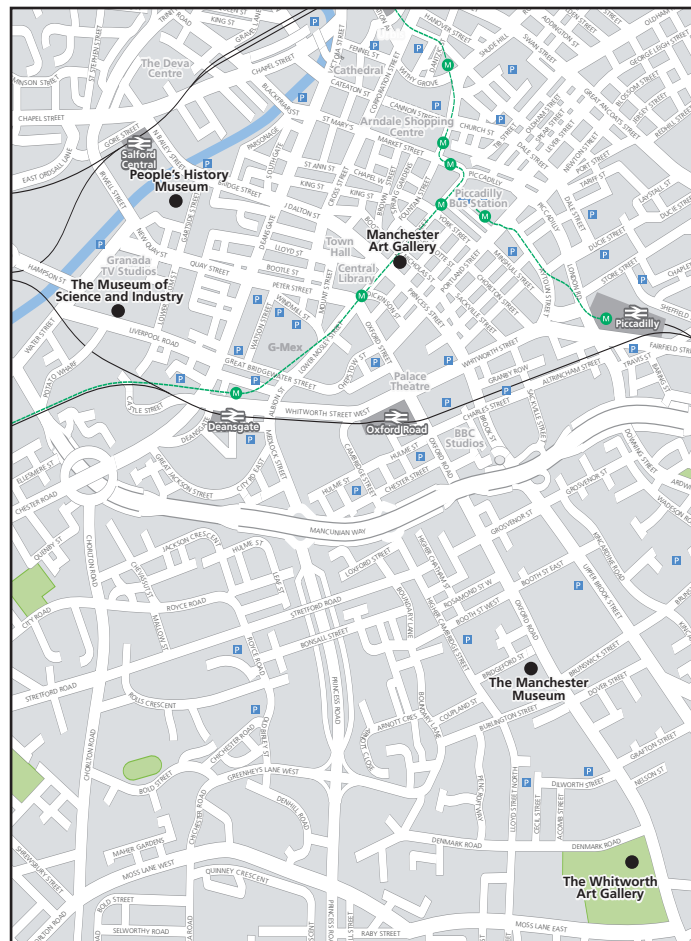
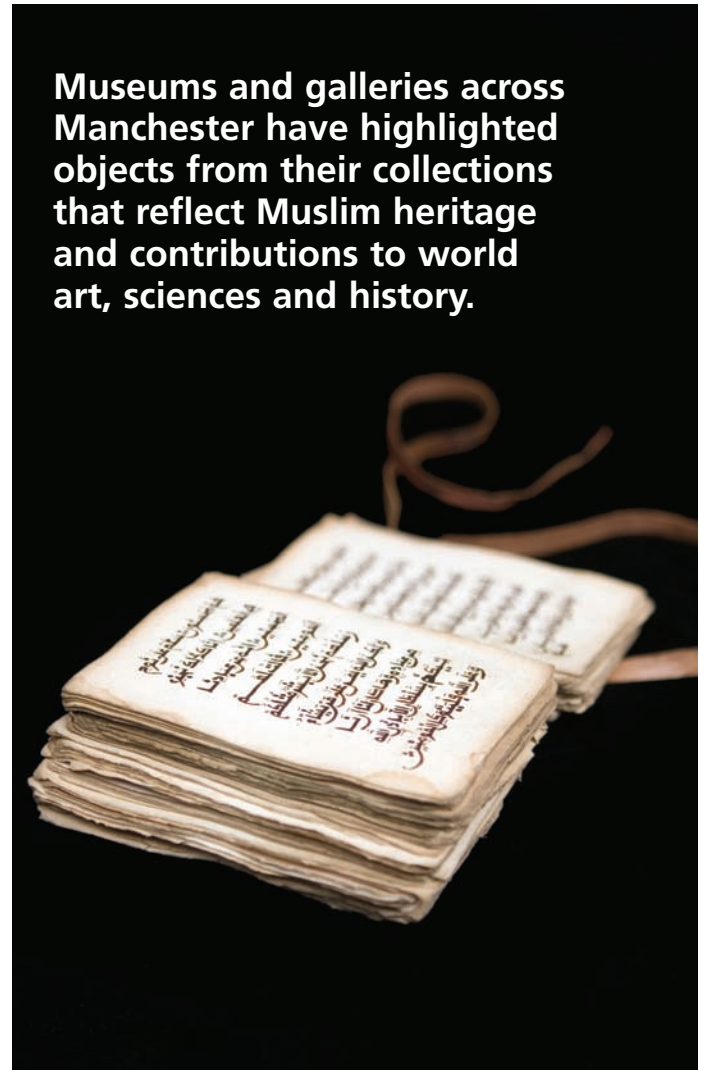




FESTIVAL OF MUSLIM CULTURES



Museums and galleries across Manchester have highlighted objects from their collections that reflect Muslim heritage and contributions to world art, sciences and history.

See them at:

Manchester Art Gallery

People's History Museum

The Manchester Museum

The Museum of Science and Industry in Manchester

The Whitworth Art Gallery

Collect a guide at each venue or download from

www.muslimcultures.org

RENAISSANCE NORTH WEST
museums for changing lives



FESTIVAL OF MUSLIM CULTURES

Museums and galleries across Manchester have highlighted objects from their collections that reflect Muslim heritage and contributions to world art, sciences and history.

Here are some of the highlights at The Manchester Museum.

Prayer book

Nigeria, late 19th century.

This book contains various prayers and religious quotations as well as notes on mystical subjects. On the pages presented are passages from the Koran, or *Qur'ân*.

Each *Qur'ân* is looked upon as something powerful, beautiful and sacred in itself. It is the source of all truth and guidance for a Muslim's spiritual and social behaviour.

Living Cultures Gallery



Embroidered quiver

Northern/Central India, 19th century or earlier.

Living Cultures Gallery



Brass bowl inlaid with Silver

Egypt or Syria, late 19th century.

Living Cultures Gallery



Bronze bowl with incised decoration

Egypt, 11th or 12th century.

Living Cultures Gallery



Coin

Morocco, Silver dirham of Mohammed IV
AH 1283 (=1886/7).

Living Cultures Gallery

You can find more objects with links to Muslim Cultures at

Manchester Art Gallery

People's History Museum

The Manchester Museum

The Museum of Science and Industry in Manchester

The Whitworth Art Gallery

Guides can be picked up at the venue or by going to

www.muslimcultures.org

MANCHESTER
1824

The University of Manchester
The Manchester Museum

Venue Details

The Manchester Museum
The University of Manchester
Oxford Road
Manchester
M13 9PL

Tel 0161 275 2634

www.manchester.ac.uk/museum

Opening Times

Tuesday - Saturday 10am - 5pm
Sunday, Monday and Bank Holidays 11am - 4pm

Free entry

RENAISSANCE NORTH WEST
museums for changing lives



FESTIVAL OF MUSLIM CULTURES

Museums and galleries across Manchester have highlighted objects from their collections that reflect Muslim heritage and contributions to world art, sciences and history.

Here are some of the highlights at Manchester Art Gallery.

Cabinet stand

Designed by William Burges, London, 1865-1873
Painted, carved and gilded pine wood with Zardozi embroidery, etched glass and Agra marble.
Pre Raphaelite Gallery



Tile

Designed by John Chambers
Made by Pilkington's Tile and Pottery Co, 1895-1900
Earthenware decorated underglaze.
Pre Raphaelite Gallery



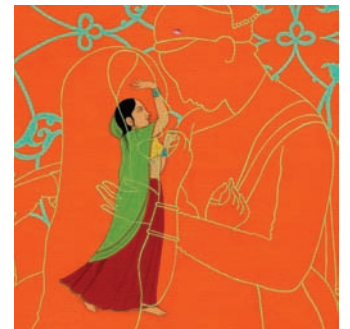
Casket

Possibly made in Lebanon, 1800-1900
Steel inlaid with gold.
Pre Raphaelite Gallery



Vase

Made in Persia, 1800-1900
Earthenware with white tin glaze and hand painted decoration.
Pre Raphaelite Gallery



Familiar Desires I

Nursa Latif Qureshi, 2005
Showing at 'Beyond the Page: Contemporary Art from Pakistan'.
30 Sept 2006 - 15 Jan 2007
MEN Gallery

You can find more objects with links to Muslim Cultures at

Manchester Art Gallery

People's History Museum

The Manchester Museum

The Museum of Science and Industry in Manchester

The Whitworth Art Gallery

Guides can be picked up at the venue or by going to

www.muslimcultures.org

RENAISSANCE NORTH WEST
museums for changing lives

Manchester Art Gallery

Venue Details

Manchester Art Gallery
Mosley Street
Manchester
M2 3JL

Tel 0161 235 8888

www.manchestergalleries.org

Opening Times

Tuesday - Sunday 10am - 5pm
Closed Monday, except Bank Holidays

Free entry



MANCHESTER
CITY COUNCIL



FESTIVAL OF MUSLIM CULTURES

Museums and galleries across Manchester have highlighted objects from their collections that reflect Muslim heritage and contributions to world art, sciences and history.

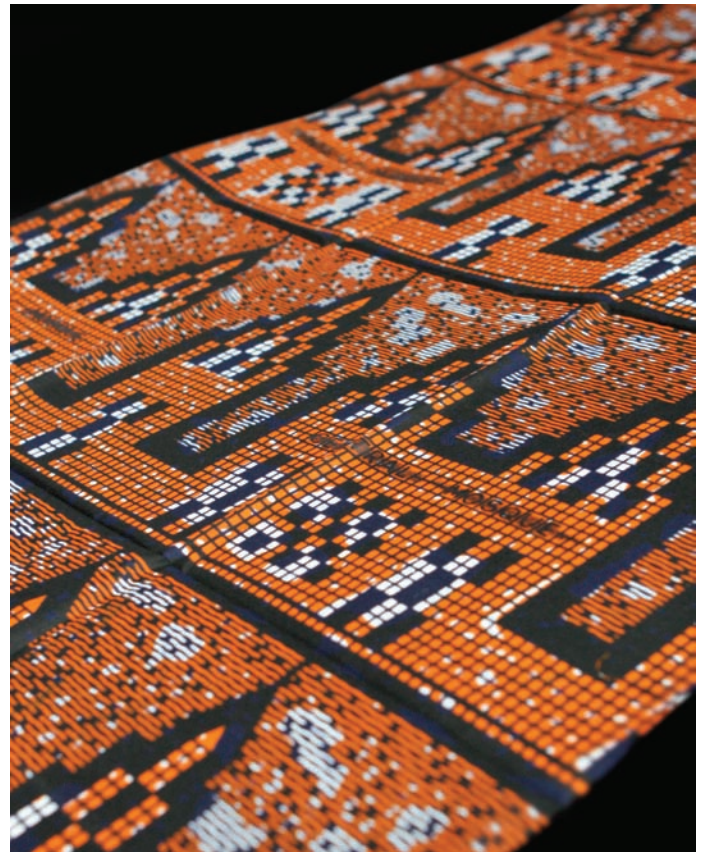
Here are some of the highlights at The Museum of Science and Industry in Manchester.

Nigerian fancy print

Cotton fabric featuring a mosaic-style design of a mosque, printed by Uniontex in Kaduna for Paterson Zochonis. Manchester-based PZ began trading in West Africa in 1879. Kaduna lies in northern Nigeria where the Hausa and Fulani ethnic groups, who are largely Muslim, predominate.

Study Area, Collections Centre, Building 1

Tuesdays to Thursdays, 10am - 4.30pm
Tel 0161 606 0127



Qibla compass

Used for finding the direction of prayer - towards the Kaaba in Mecca. c.1850

Manchester Science Gallery,
Building 1



Celestial globe showing Arabic view of the heavens

Iran, c.1850

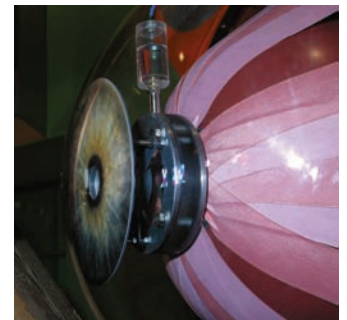
Manchester Science Gallery,
Building 1



Trademark printing block

Used by Paterson Zochonis on cloth being exported to Arabic-speaking markets.

Textiles Gallery, Building 1



Eyeball - seeing sense

Interactive exhibit about our sense of sight, our understanding of which was partly developed by the 10th century scientist Ibn al-Haitham. Xperiment Gallery, Building 1

You can find more objects with links to Muslim Cultures at

Manchester Art Gallery

People's History Museum

The Manchester Museum

The Museum of Science and Industry in Manchester

The Whitworth Art Gallery

Guides can be picked up at the venue or by going to

www.muslimcultures.org

RENAISSANCE NORTH WEST
museums for changing lives

THE MUSEUM
OF SCIENCE &
INDUSTRY
IN MANCHESTER

Venue Details

The Museum of Science and Industry in Manchester
Liverpool Road
Castlefield
Manchester
M3 4FP

Tel 0161 832 2244

www.msim.org.uk

Opening Times

Monday - Sunday 10am - 5pm

Free entry



FESTIVAL OF MUSLIM CULTURES

Museums and galleries across Manchester have highlighted objects from their collections that reflect Muslim heritage and contributions to world art, sciences and history.

Here are some of the highlights at the People's History Museum.

Stoneware jug

Stoneware jug commemorating the Emin Pasha Relief Expedition, 1887-1889. This was the last major European expedition into Africa, organised to rescue Emin Pasha, believed to be a convert to Islam and Governor of the province of Equatoria which was besieged by Mahdist tribes. They were led by Muhammad Ahmad, an Islamic religious leader who had declared holy war.

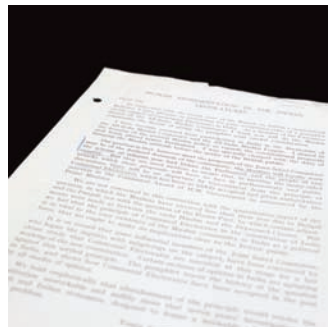
Main galleries



Kangree

An earthenware portable heating pot which was filled with charcoal, possibly 1970s.

Main galleries



Open letter

Muslim Representation in the Indian Legislatures; President of the Calcutta Session of the All-Indian Muslim Conference, 1932.

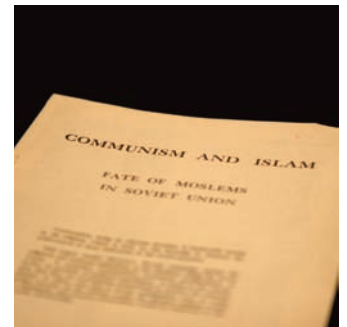
Main galleries



Pakistan passport

Issued to Master Mohammad Akram by the Government of Pakistan, Ministry of Home Affairs, December 1967.

Main galleries



Pamphlet

Communism and Islam: The Fate of Moslems in the Soviet Union, circa 1947.

Main galleries

You can find more objects with links to Muslim Cultures at

Manchester Art Gallery

People's History Museum

The Manchester Museum

The Museum of Science and Industry in Manchester

The Whitworth Art Gallery

Guides can be picked up at the venue or by going to

www.muslimcultures.org

RENAISSANCE NORTH WEST
museums for changing lives

PH People's
History
Museum

Venue Details

People's History Museum
The Pump House
Bridge Street
Manchester
M3 3ER

Tel 0161 839 6061
www.phm.org.uk

Opening Times

Tuesday - Sunday 11am - 4.30pm
Closed Mondays except Bank Holidays

Free entry



FESTIVAL OF MUSLIM CULTURES

Museums and galleries across Manchester have highlighted objects from their collections that reflect Muslim heritage and contributions to world art, sciences and history.

Here are some of the highlights at The Whitworth Art Gallery.

Talismanic Shirt

1800 - 99, Turkey. Coloured inks on cotton.

Talismanic shirts were believed to protect the wearer against sickness and all types of evil. They were covered in penwork with a selection of Qur'anic verses and magic formulas based on a system of squares filled with numbers and letters. It may have been folded to fit into an amulet case.

Case 7, Textile Gallery



Turkish Towel

1700 - 99, Turkey.
Cotton muslin embroidered with coloured silks and flat metal strip.

Case 2, Textile Gallery



Mohammad Siddik Khatri

Samples of 14 stages of printing 'ajrakh', 1990 - 97, India (Dhamadka, Gujarat).

Case 1, Textile Gallery



Syrian coat

Syrian Coat ('aba') 1880 - 99, Syria. Silk and metal thread on cotton warp.

Case 3, Textile Gallery



Malian Robe

Malian Tunic and Cap, 1880 - 99, Mali, cotton.

Case 7, Textile Gallery

You can find more objects with links to Muslim Cultures at

Manchester Art Gallery

People's History Museum

The Manchester Museum

The Museum of Science and Industry in Manchester

The Whitworth Art Gallery

Guides can be picked up at the venue or by going to

www.muslimcultures.org

RENAISSANCE NORTH WEST
museums for changing lives

MANCHESTER
1824

The University of Manchester
The Whitworth Art Gallery

Venue Details

The Whitworth Art Gallery
The University of Manchester
Oxford Road
Manchester
M15 6ER

Tel 0161 275 7450

www.manchester.ac.uk/whitworth

Opening Times

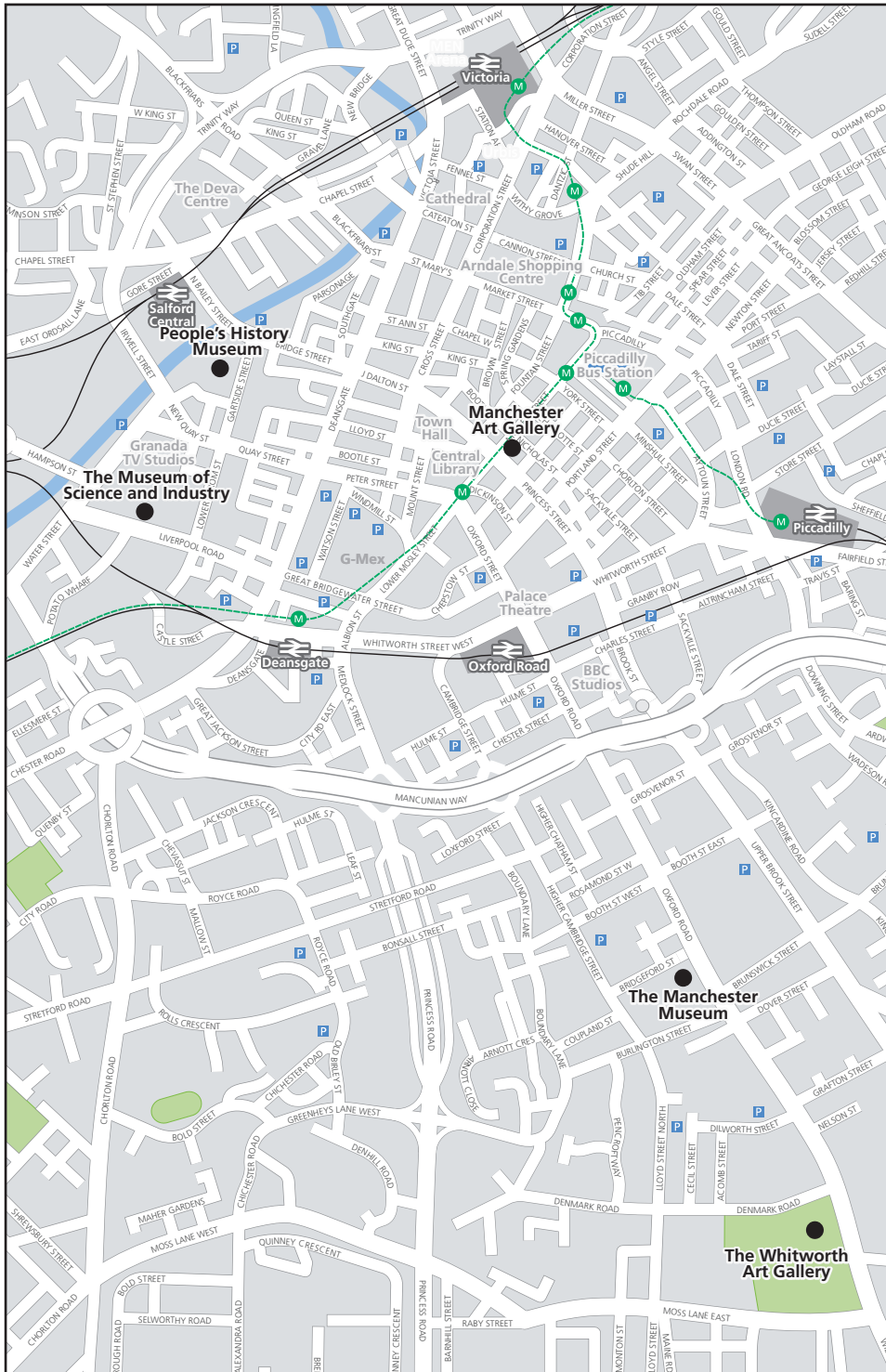
Monday - Saturday 10am - 5pm

Sunday 2pm - 5pm

Free entry



FESTIVAL OF MUSLIM CULTURES



Manchester Art Gallery

Mosley Street
Manchester
M2 3JL
Tel 0161 235 8888
www.manchestergalleries.org

People's History Museum

The Pump House
Bridge Street
Manchester
M3 3ER
Tel 0161 839 6061
www.phm.org.uk

The Manchester Museum

The University of Manchester
Oxford Road
Manchester
M13 9PL
Tel 0161 275 2634
www.manchester.ac.uk/museum

The Museum of Science and Industry in Manchester

Liverpool Road
Castlefield
Manchester
M3 4FP
Tel 0161 832 2244
www.msim.org.uk

The Whitworth Art Gallery

The University of Manchester
Oxford Road
Manchester
M15 6ER
Tel 0161 275 7450
www.manchester.ac.uk/whitworth

RENAISSANCE NORTH WEST
museums for changing lives